

BLUE STREAK

FAMILY

Winter Community Forums

Tuesday, January 9th, 2018

Wednesday, January 10th, 2018

Thursday, January 11th, 2018

Welcome

Dr. Eugene Sanders
CEO & Superintendent

Welcome

Mrs. Brigitte Green-Churchwell

Board of Education, President

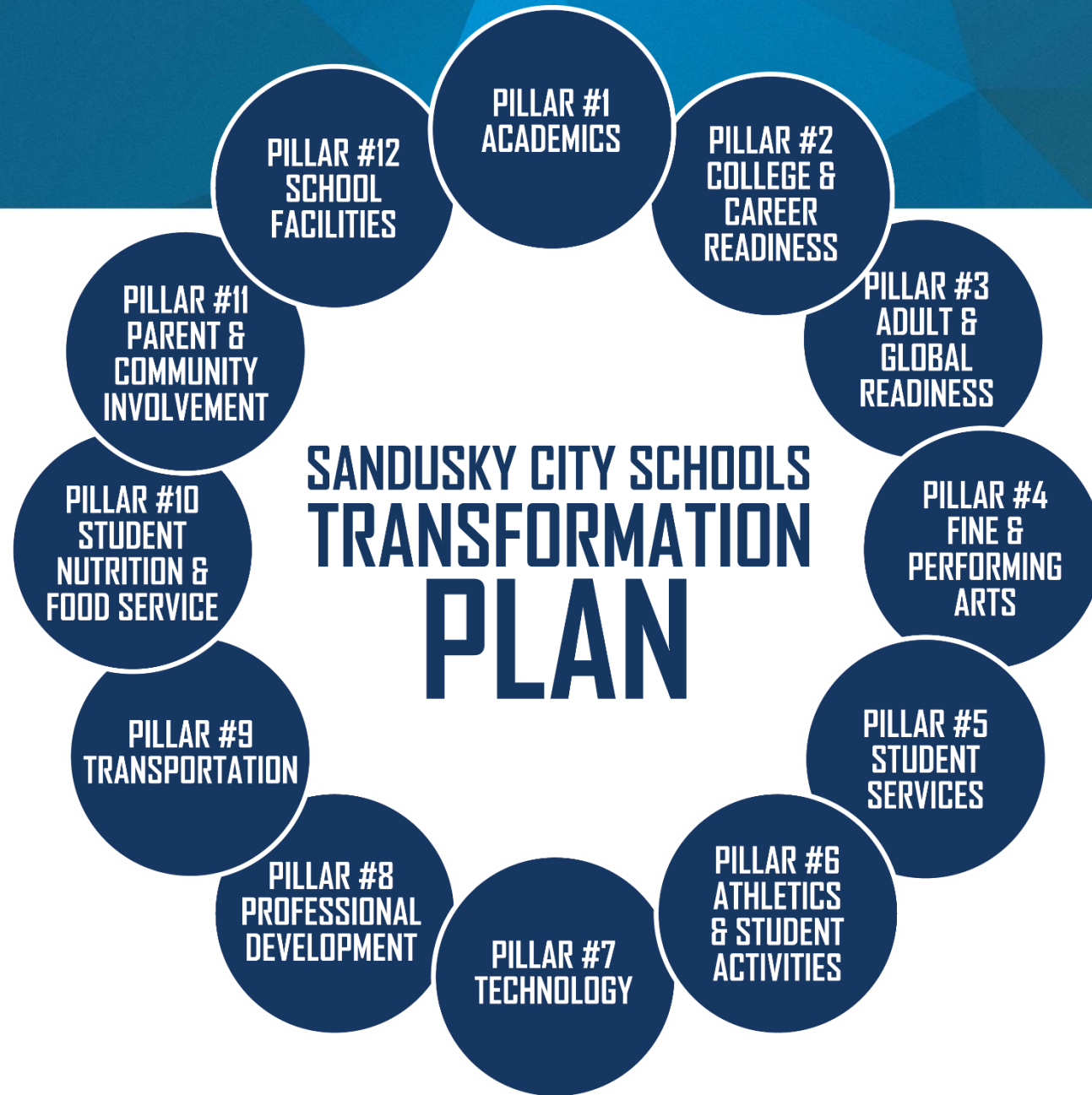
Transformation Plan Update

Mr. Dan Poggiali

Chief of Staff & Transformation Officer

BLUE STREAK

FAMILY



Financial Update

Mrs. Gina Deppert

Chief Financial Officer & Treasurer

Academic Update

Dr. Julie McDonald
Chief Academic Officer

- Assessment and focus in Reading, Math, and Graduation Rate
- Project-Based Learning
- Spring Testing
- Summer Programming
- Technology and Learning

Building Better Dreams **Building Plan Update**

Mr. Robert Blatchford
Lesko Architecture

Mr. Fred Rodgers
Gilbane-Ozanne Construction

BLUE STREAK FAMILY

NEW HANCOCK PK-K SCHOOL

367 Students

56,646 sf.

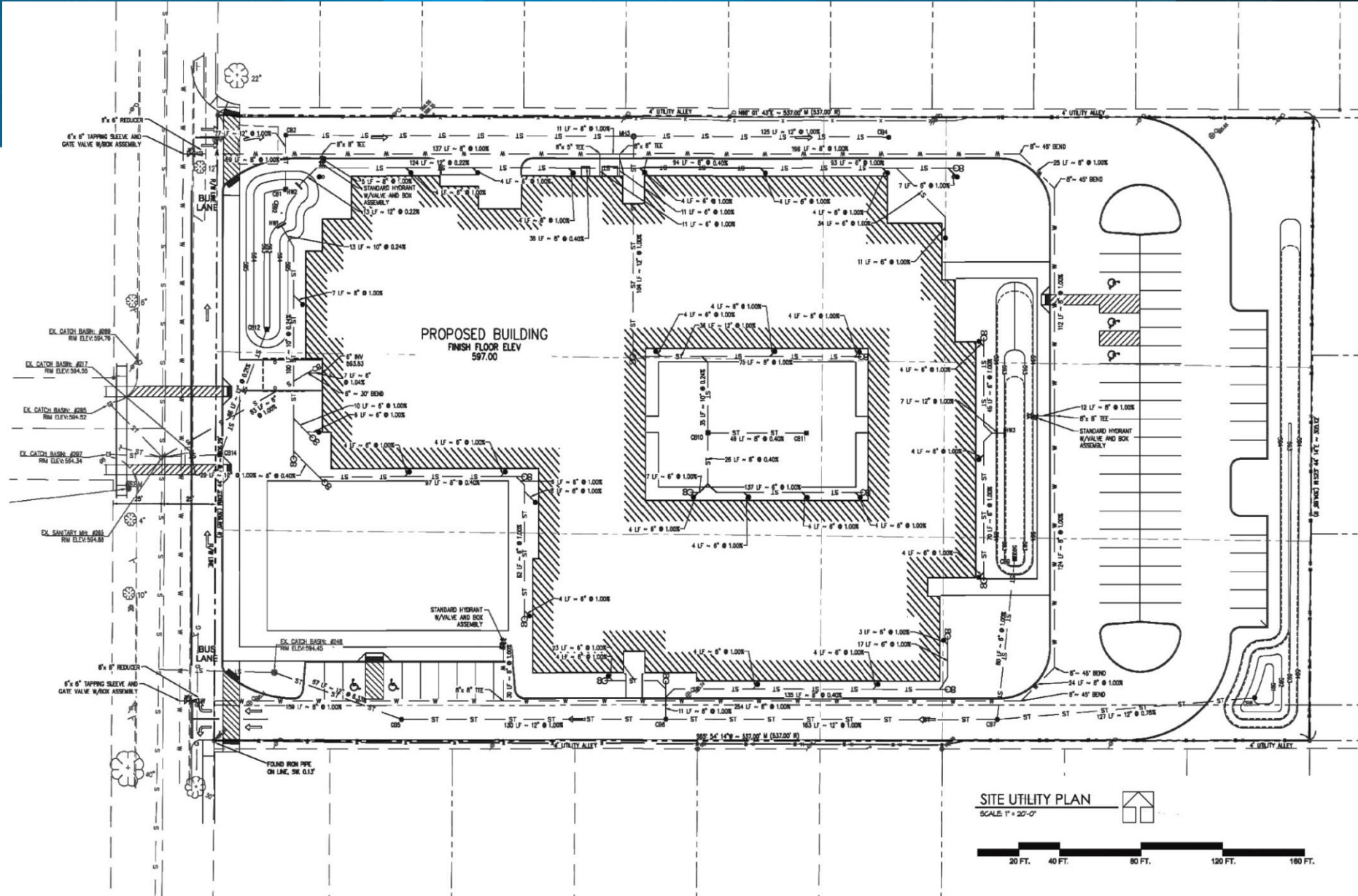


BLUE STREAK FAMILY

NEW HANCOCK PK-K SCHOOL

367 Students

56,646 sf.

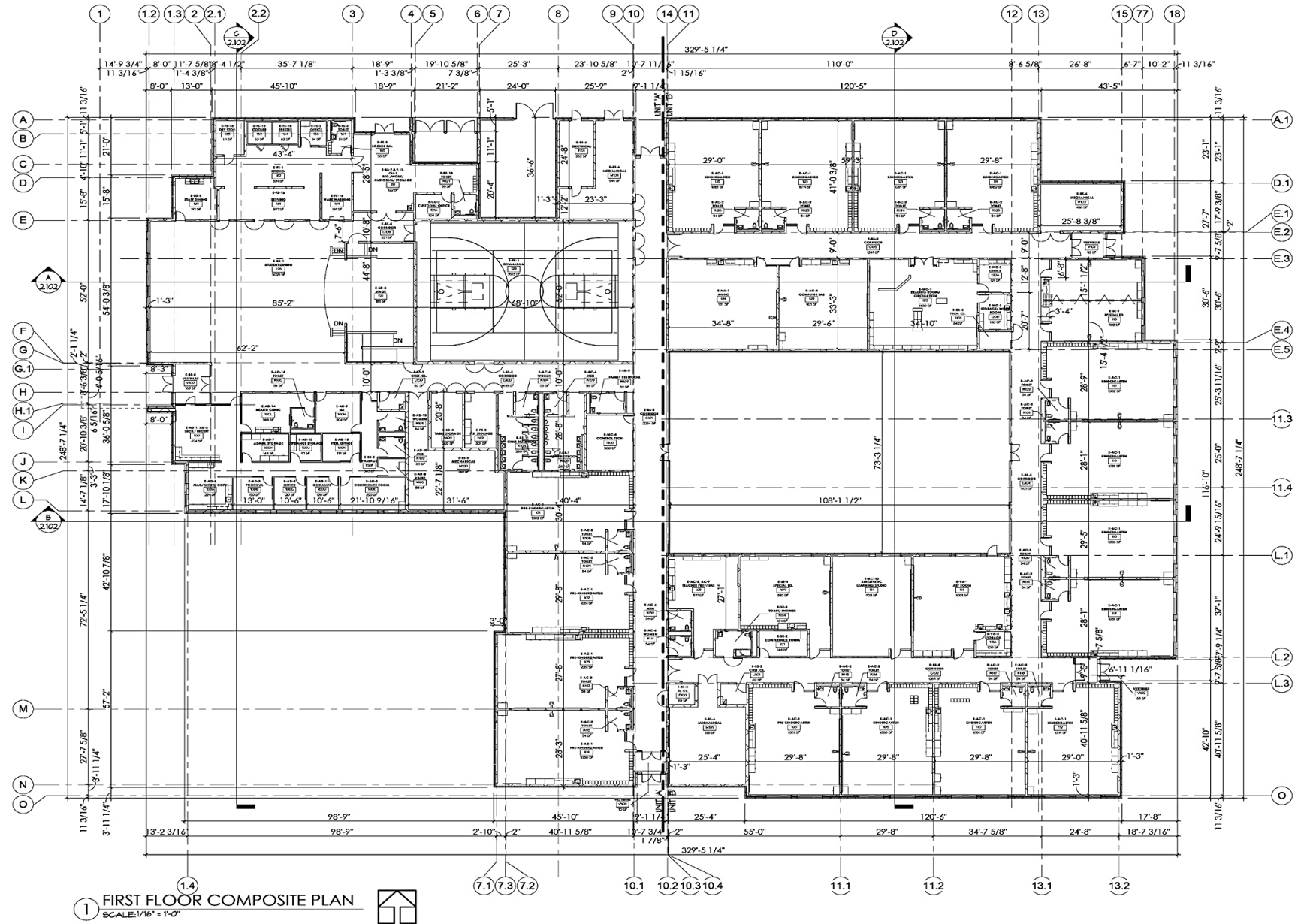


BLUE STREAK FAMILY

NEW HANCOCK PK-K SCHOOL

367 Students

56,646 sf.



BLUE STREAK FAMILY

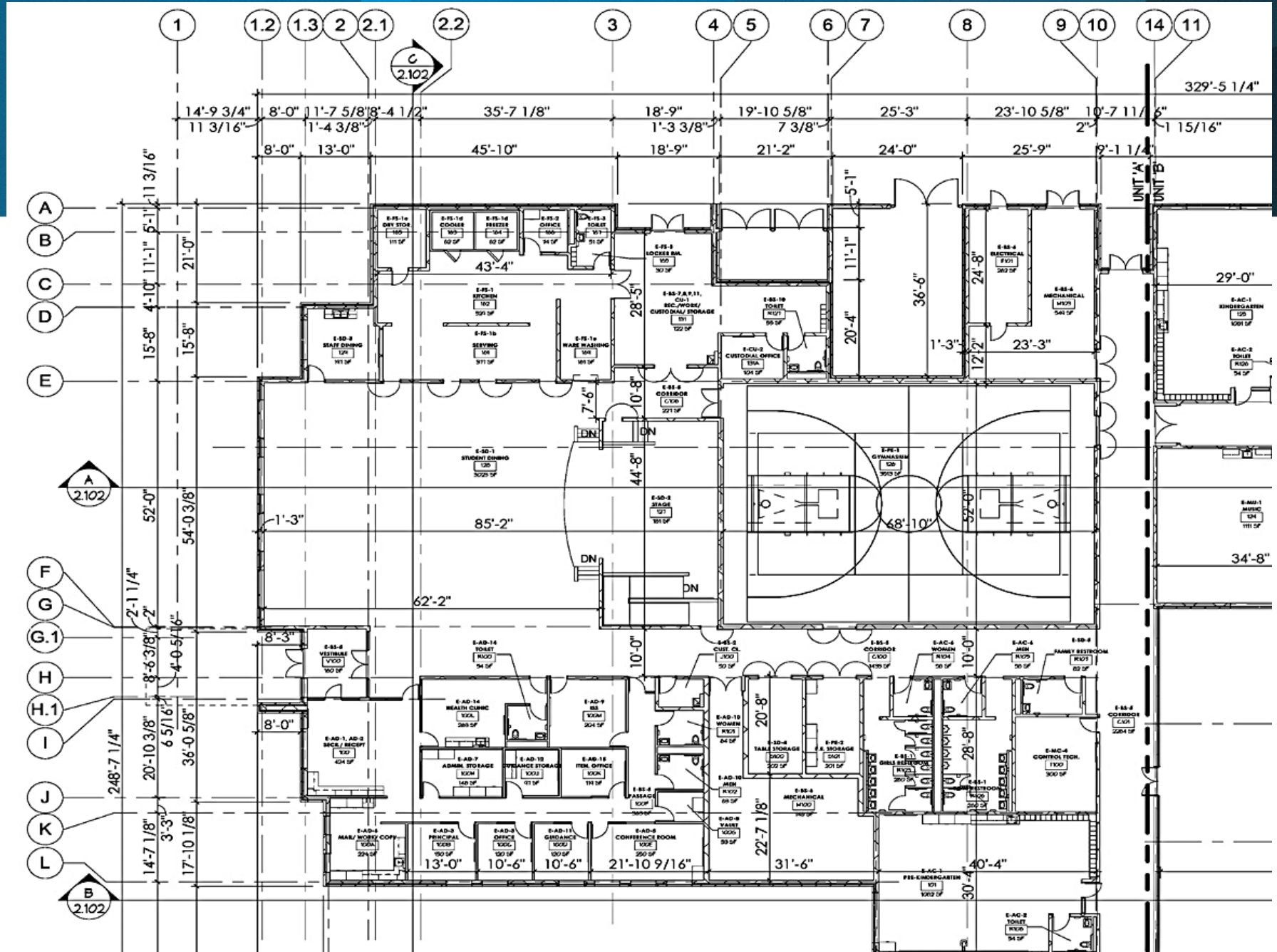
NEW HANCOCK PK-K SCHOOL

367 Students

56,646 sf.



LESKO ARCHITECTURE



BLUE STREAK FAMILY

NEW HANCOCK PK-K SCHOOL

367 Students

56,646 sf.

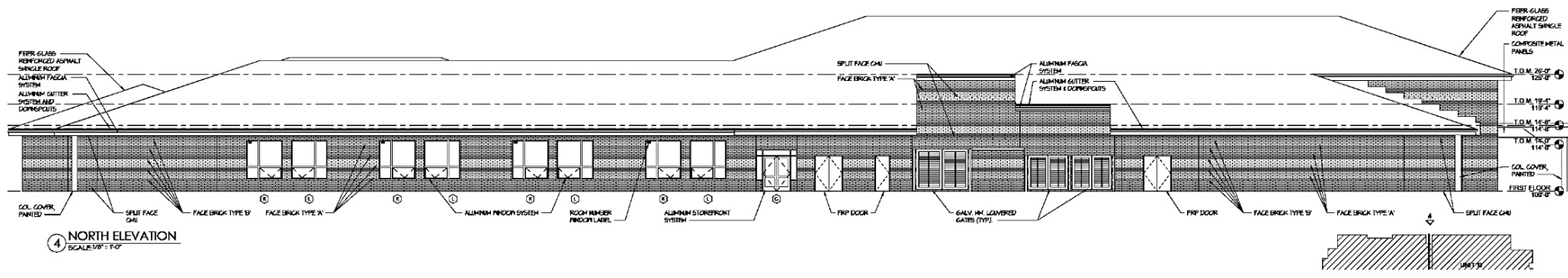
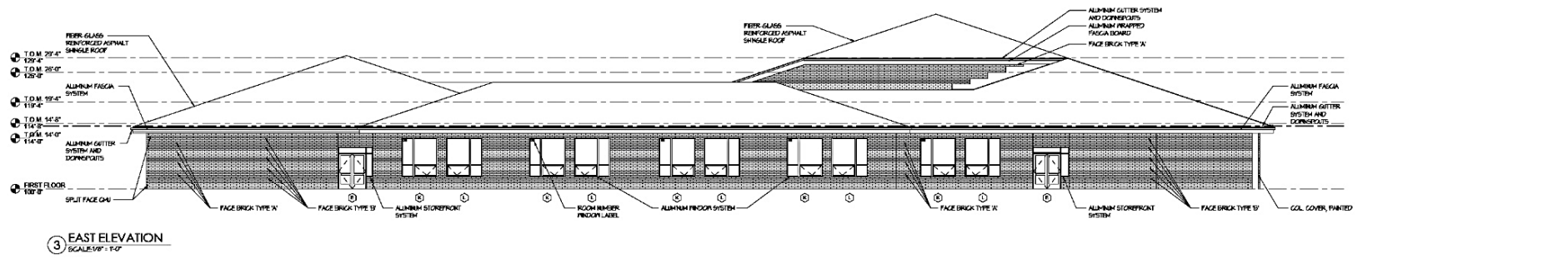
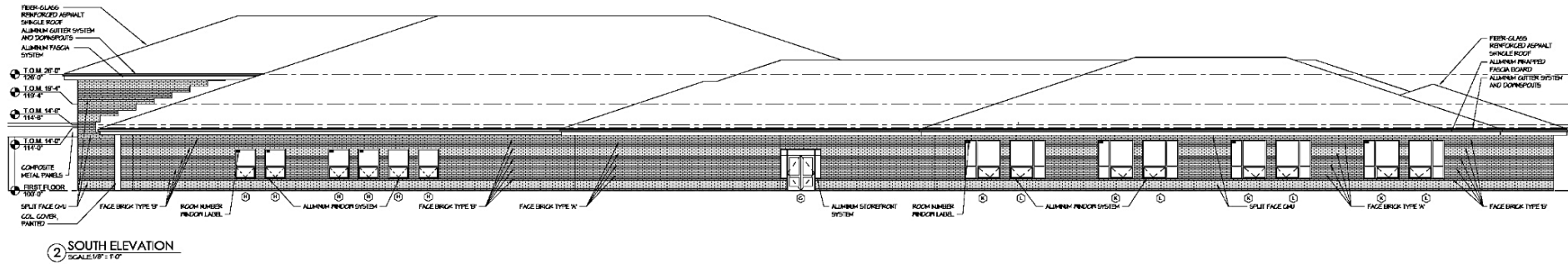
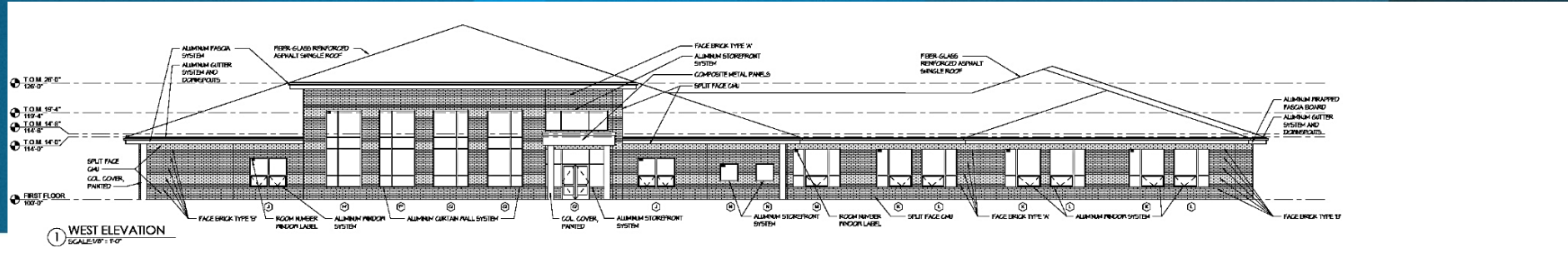


BLUE STREAK FAMILY

NEW HANCOCK PK-K SCHOOL

367 Students

56,646 sf.

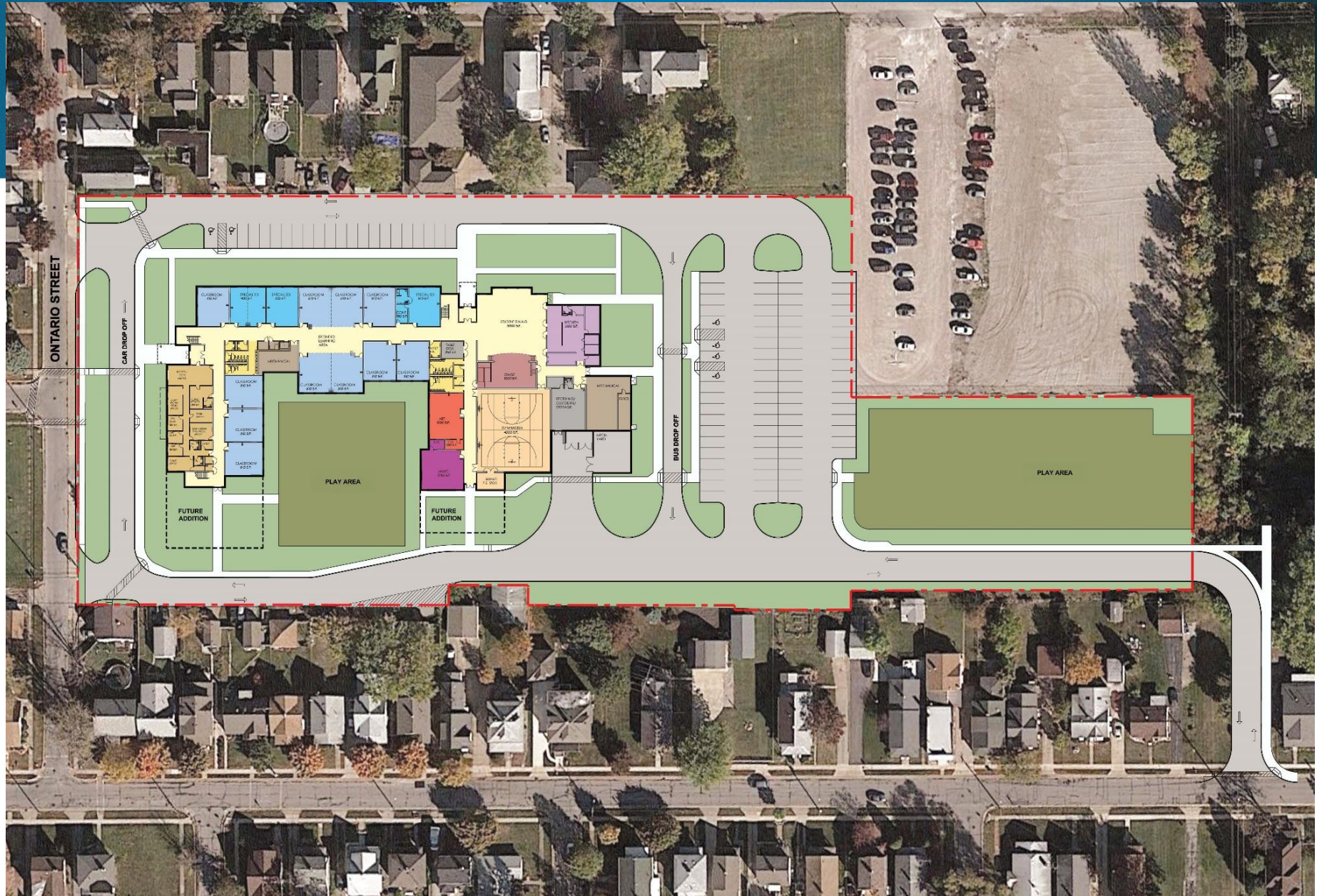


BLUE STREAK FAMILY

NEW ONTARIO
1-2 SCHOOL

548 Students

67,285 sf.

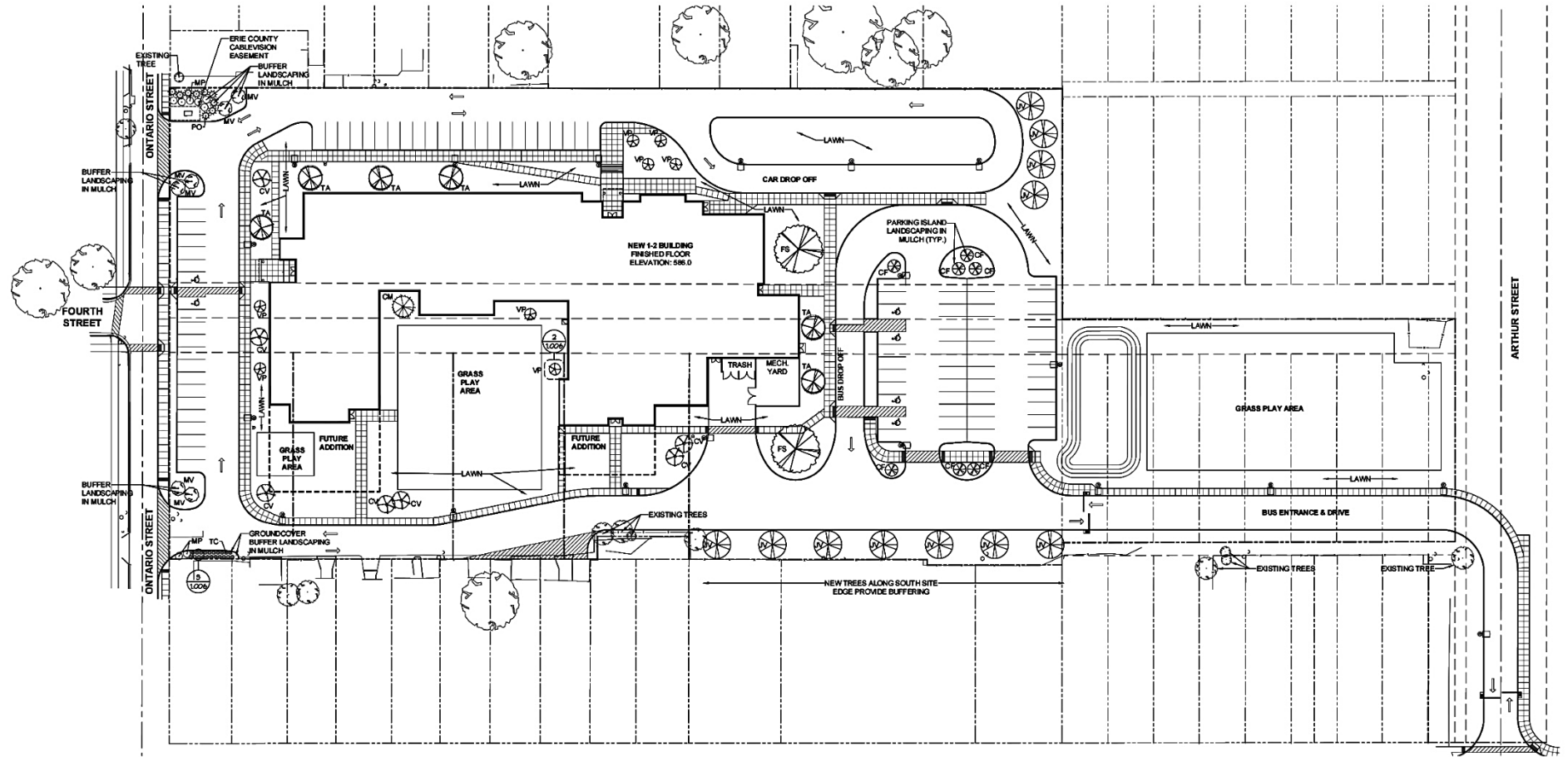


BLUE STREAK FAMILY

NEW ONTARIO
1-2 SCHOOL

548 Students

67,285 sf.



LANDSCAPE AND BUFFERING PLAN
SCALE: 1" = 30'-0"



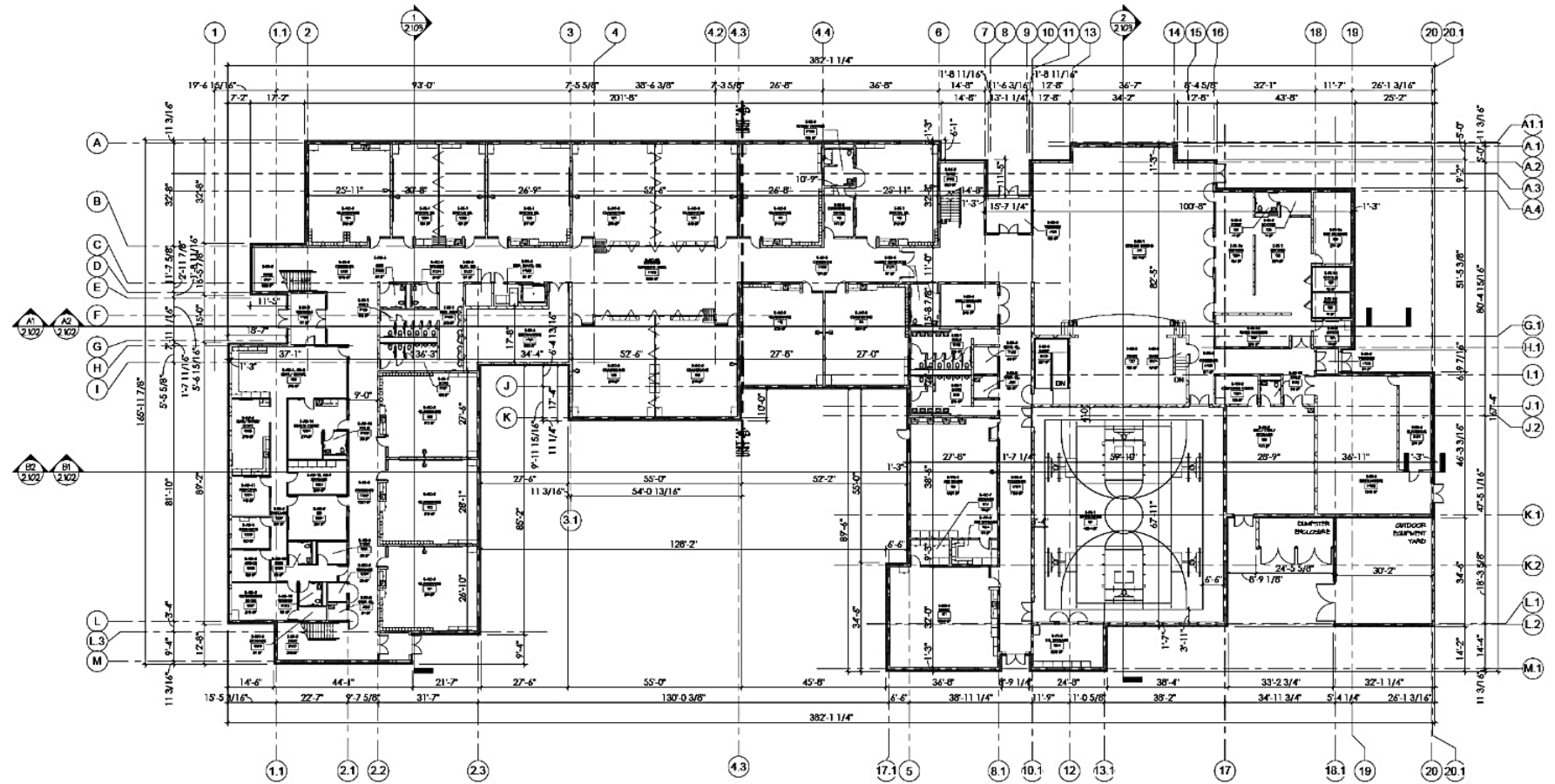
BLUE STREAK FAMILY

NEW ONTARIO
1-2 SCHOOL

1ST FLOOR
COMPOSITE PLAN

548 Students

67,285 sf.



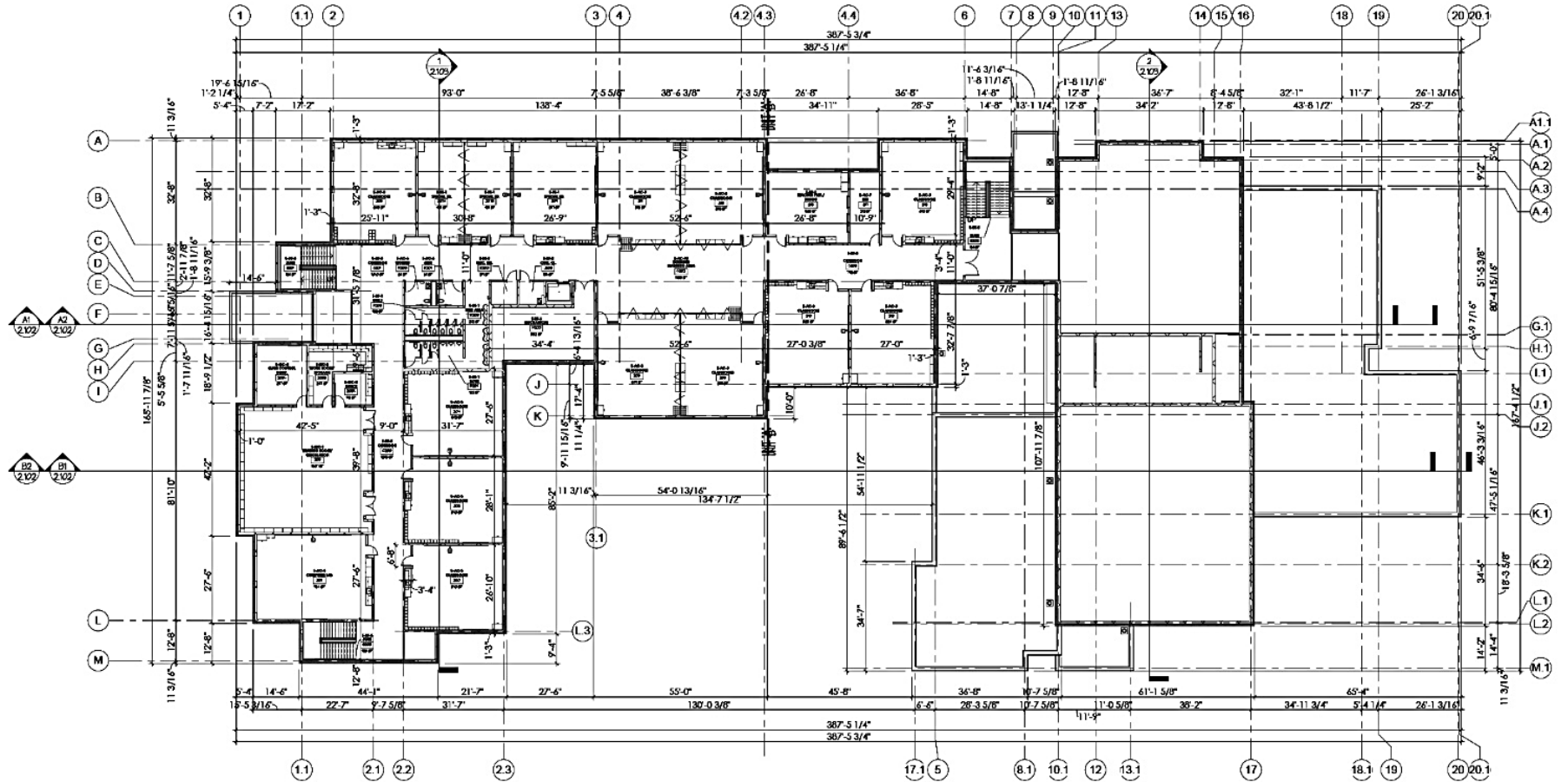
BLUE STREAK FAMILY

NEW ONTARIO 1-2 SCHOOL

2ND FLOOR COMPOSITE PLAN

548 Students

67,285 sf.

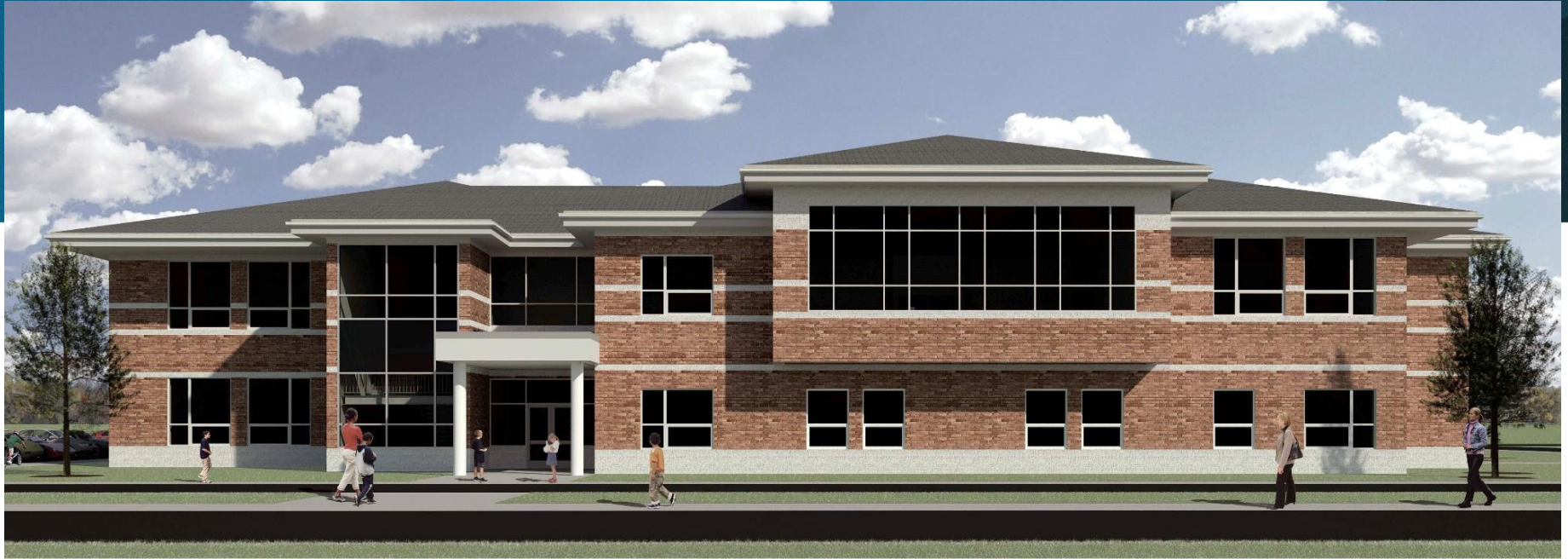


BLUE STREAK FAMILY

NEW ONTARIO 1-2 SCHOOL

548 Students

67,285 sf.

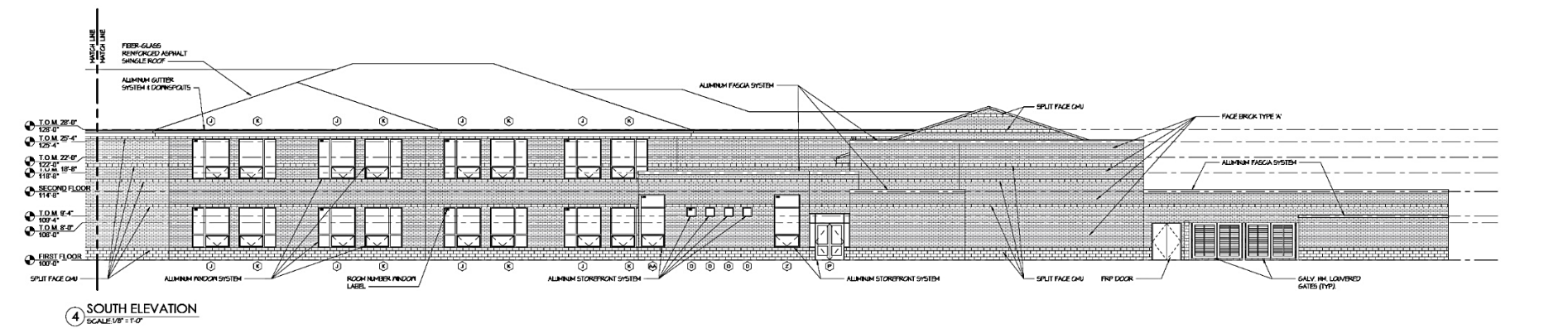
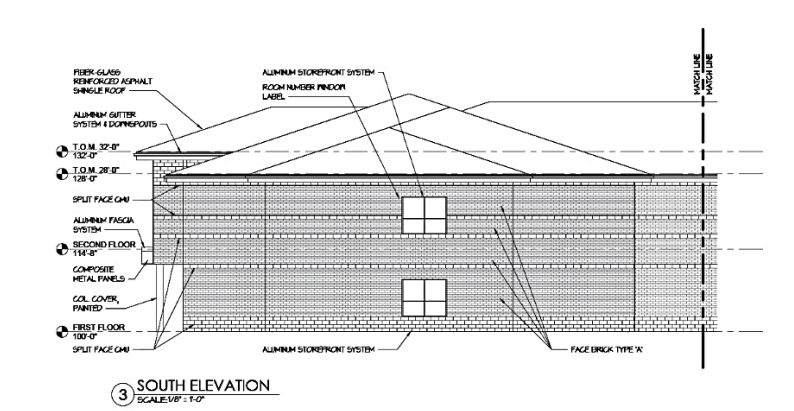
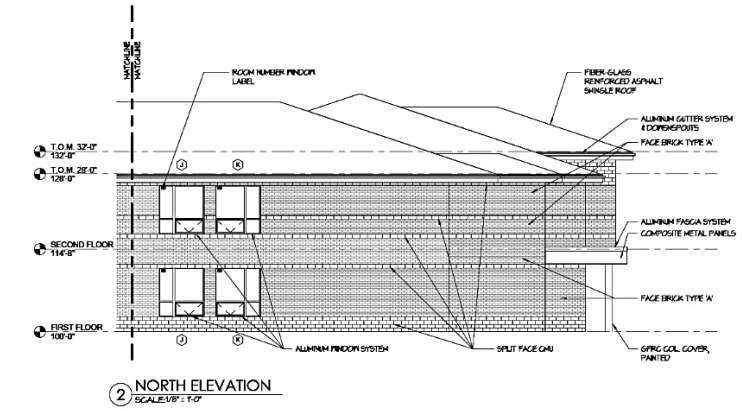
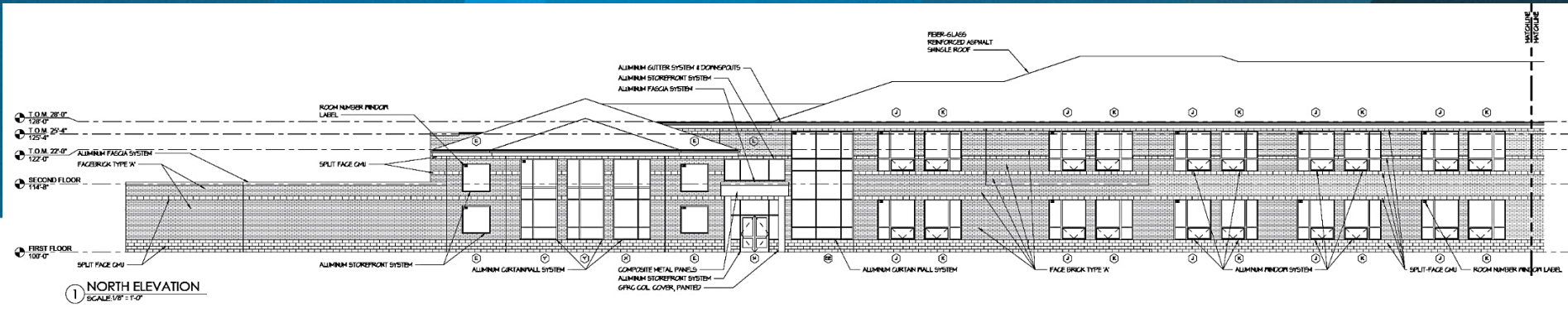


BLUE STREAK FAMILY

NEW ONTARIO
1-2 SCHOOL

548 Students

67,285 sf.

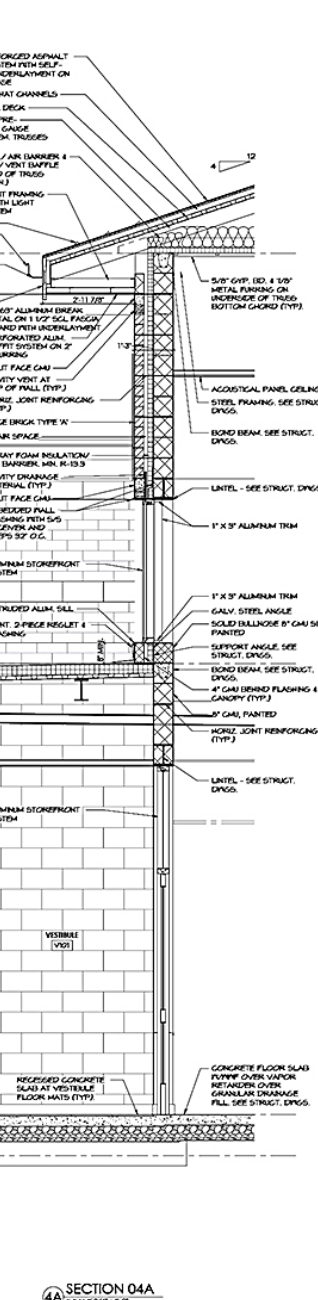
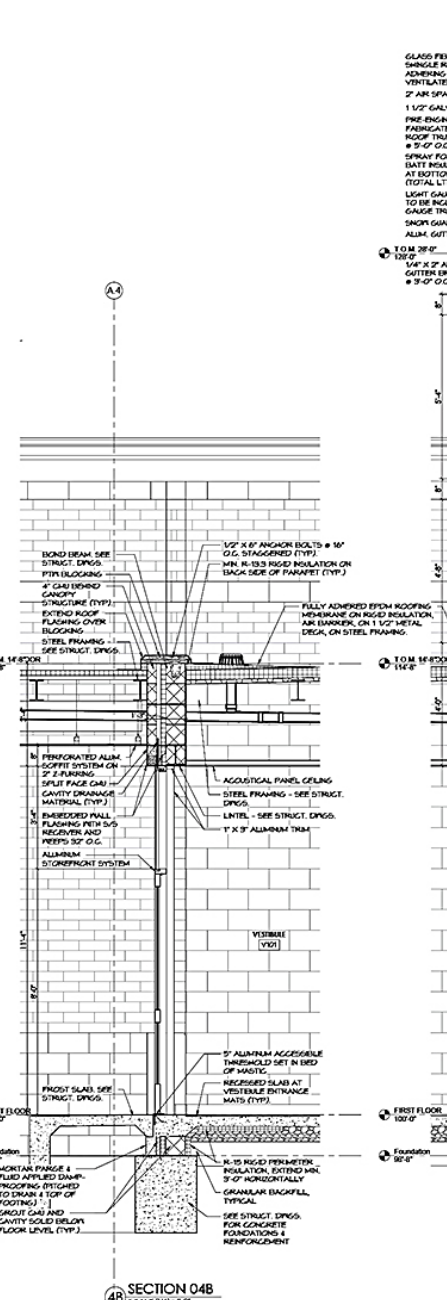
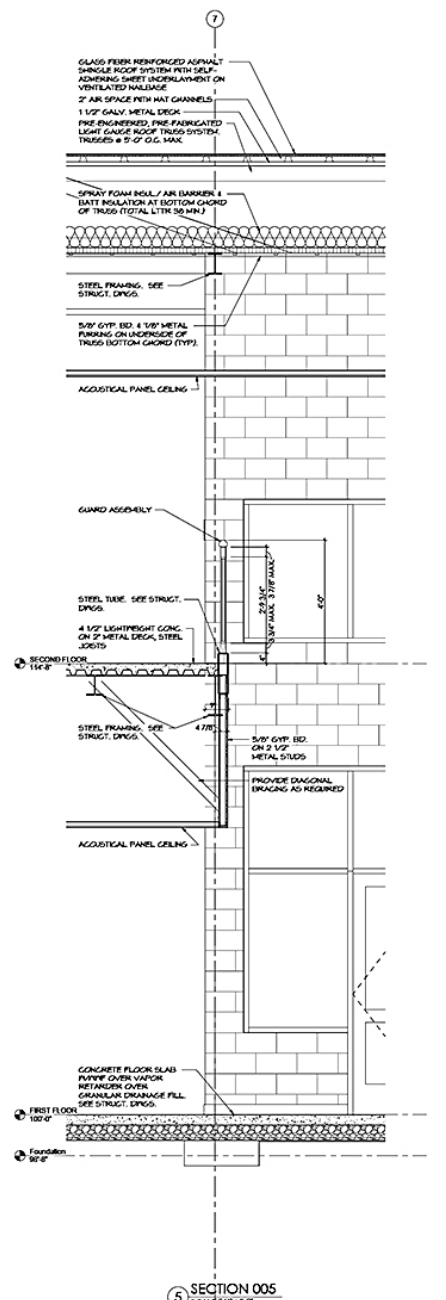
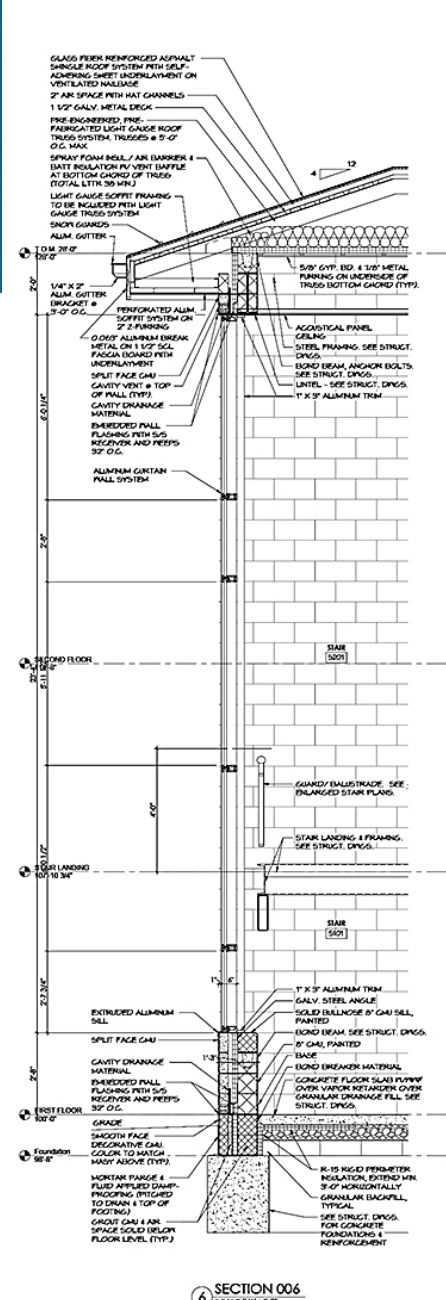


BLUE STREAK FAMILY

NEW ONTARIO
1-2 SCHOOL

548 Students

67,285 sf.



BLUE STREAK FAMILY

NEW ONTARIO 1-2 SCHOOL

548 Students

67,285 sf.

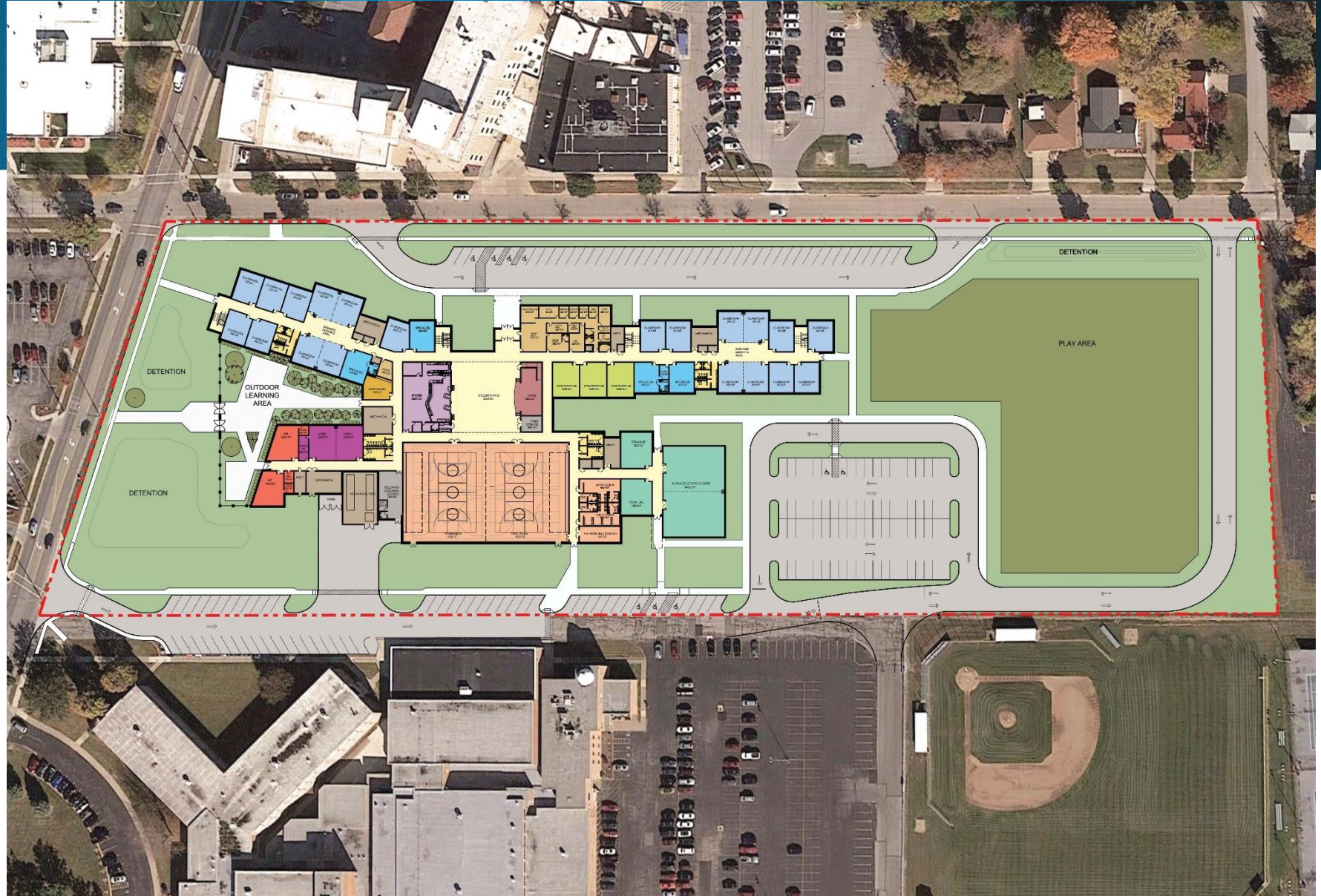


BLUE STREAK FAMILY

NEW INTERMEDIATE SCHOOL

990 Students

145,516 sf.



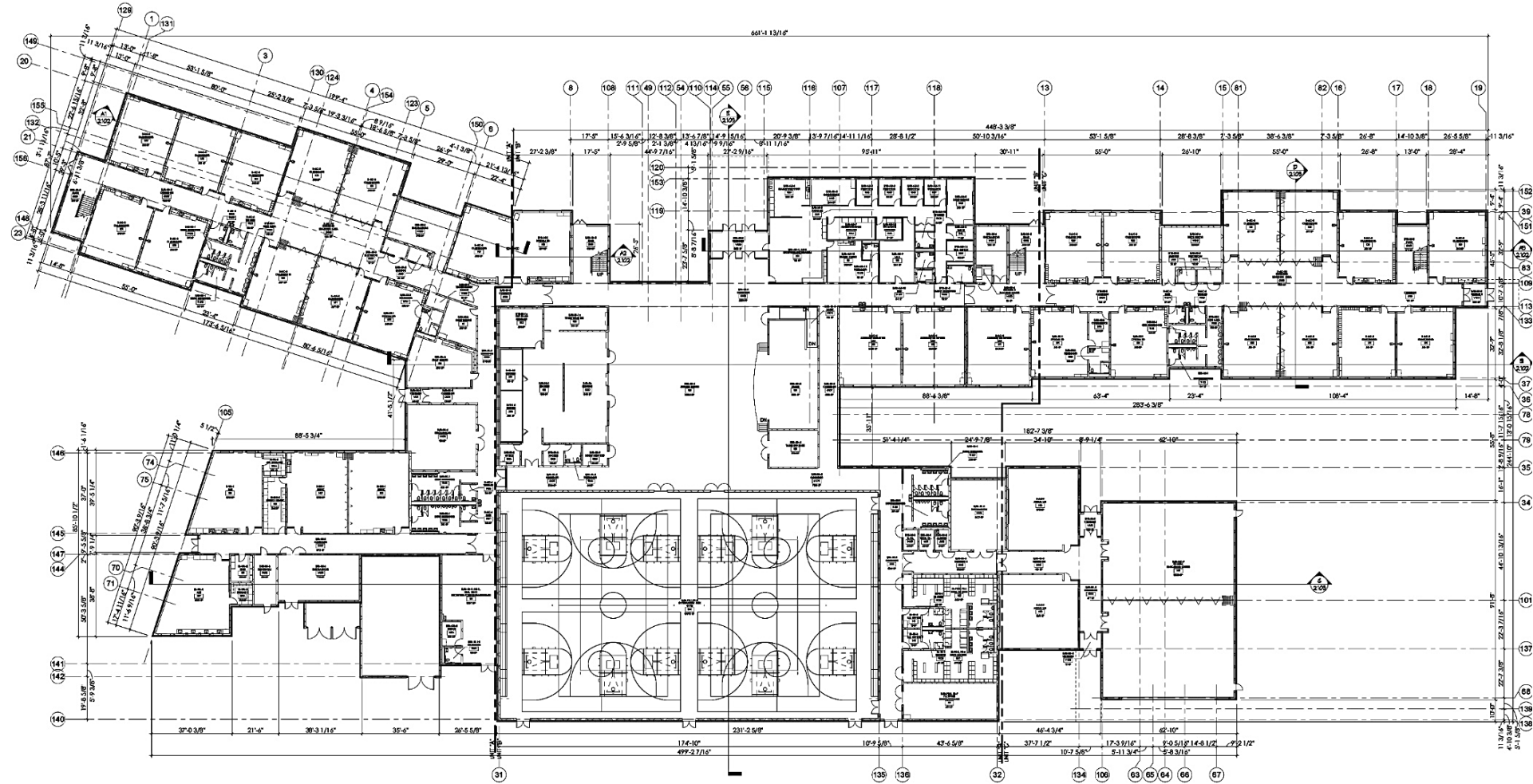
LESKO
ARCHITECTURE

BLUE STREAK FAMILY

NEW INTERMEDIATE SCHOOL

990 Students

145,516 sf.



1 FIRST FLOOR COMPOSITE PLAN
SCALE: 1/8" = 1'-0"

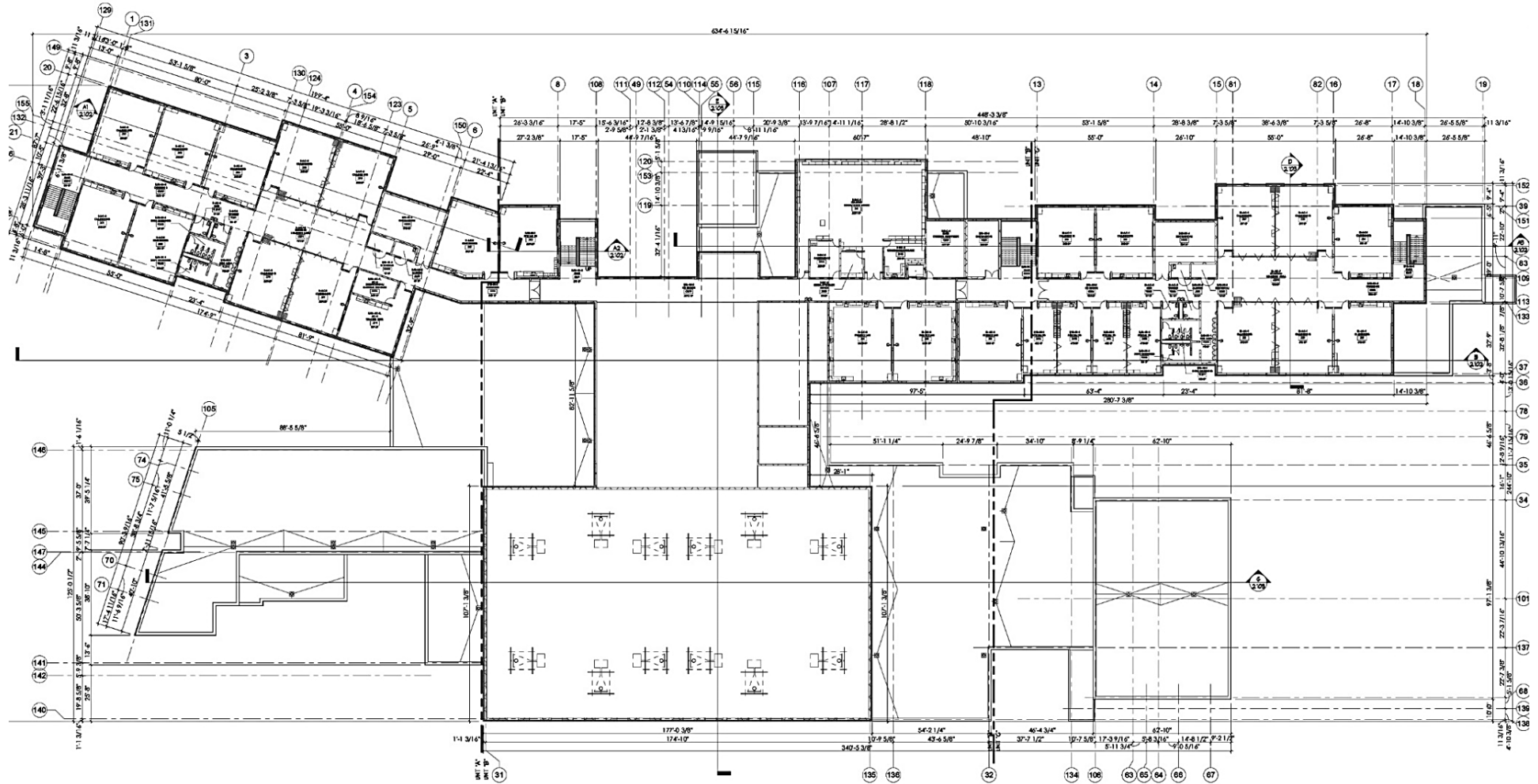


BLUE STREAK FAMILY

NEW
INTERMEDIATE
SCHOOL

990 Students

145,516 sf.



BLUE STREAK FAMILY

NEW INTERMEDIATE SCHOOL

990 Students

145,516 sf.

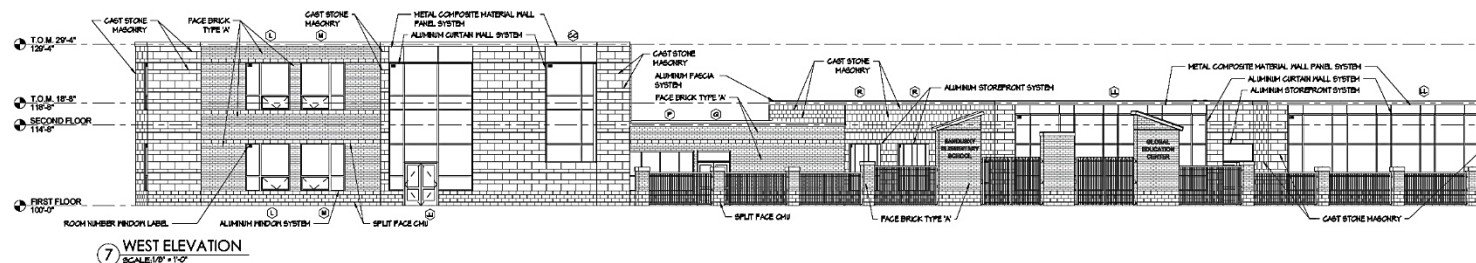
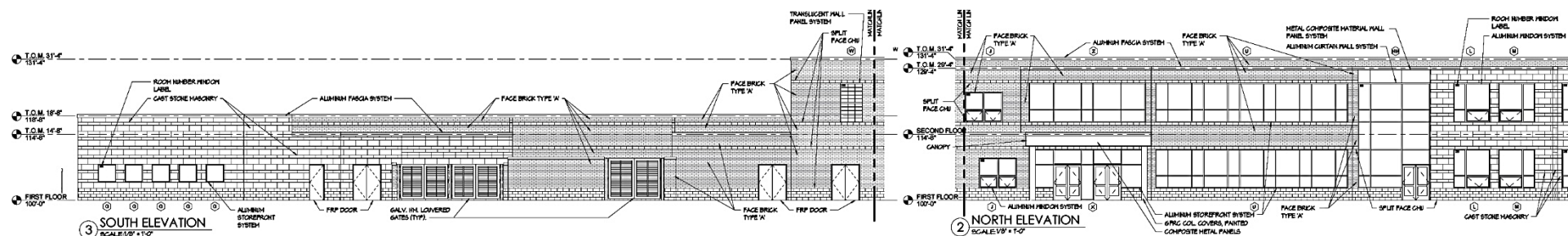
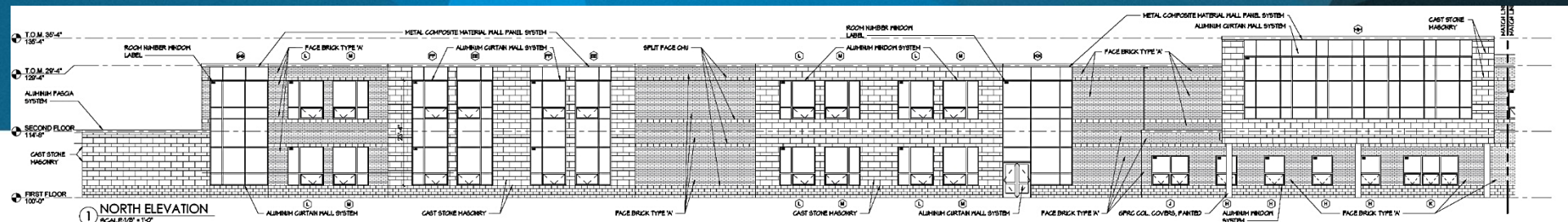


BLUE STREAK FAMILY

NEW INTERMEDIATE SCHOOL

990 Students

145,516 sf.

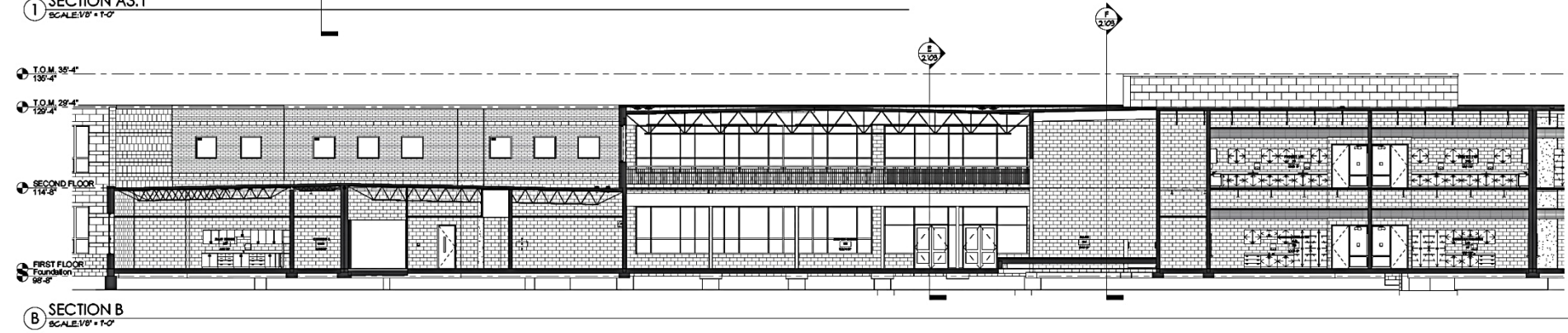
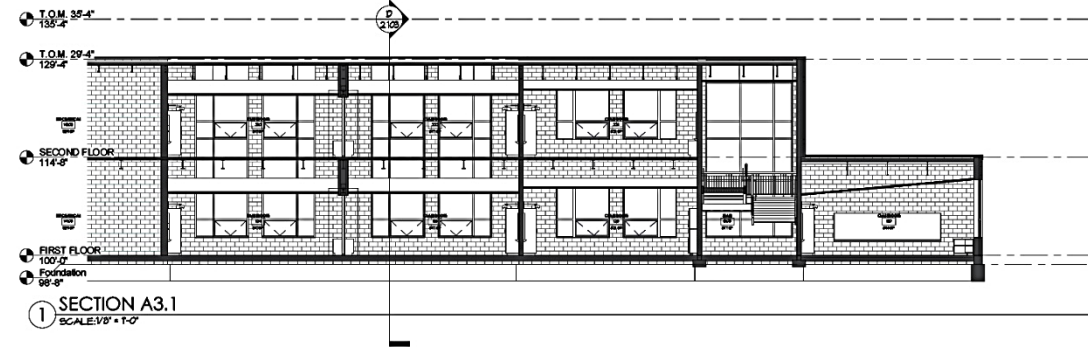
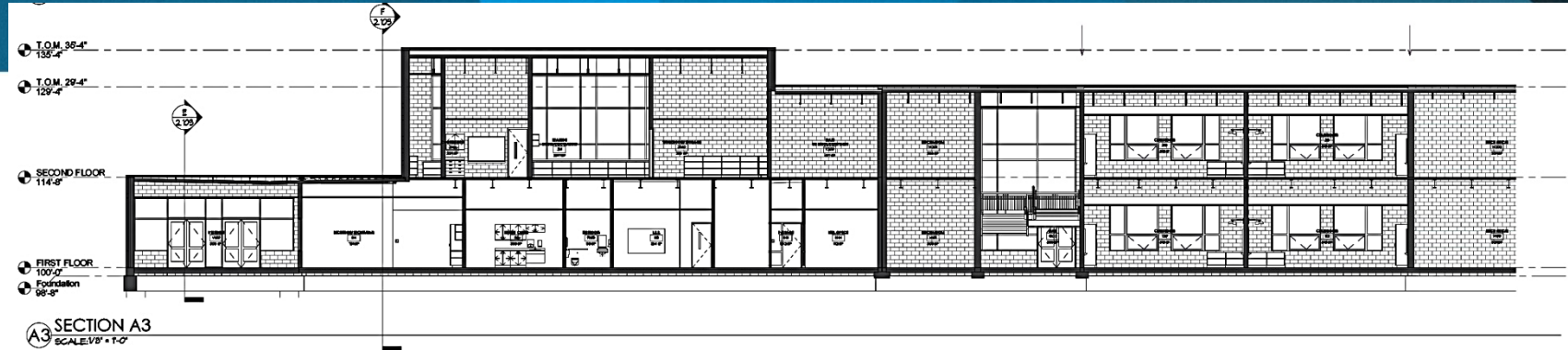


BLUE STREAK FAMILY

NEW INTERMEDIATE SCHOOL

990 Students

145,516 sf.



BLUE STREAK FAMILY

**NEW
INTERMEDIATE
SCHOOL**

990 Students

145,516 sf.

Sandusky Intermediate School (Hayes 3-6) Phase 1 Site Utilization Plan (Site Clearing & Demolition Phase)



BLUE STREAK FAMILY

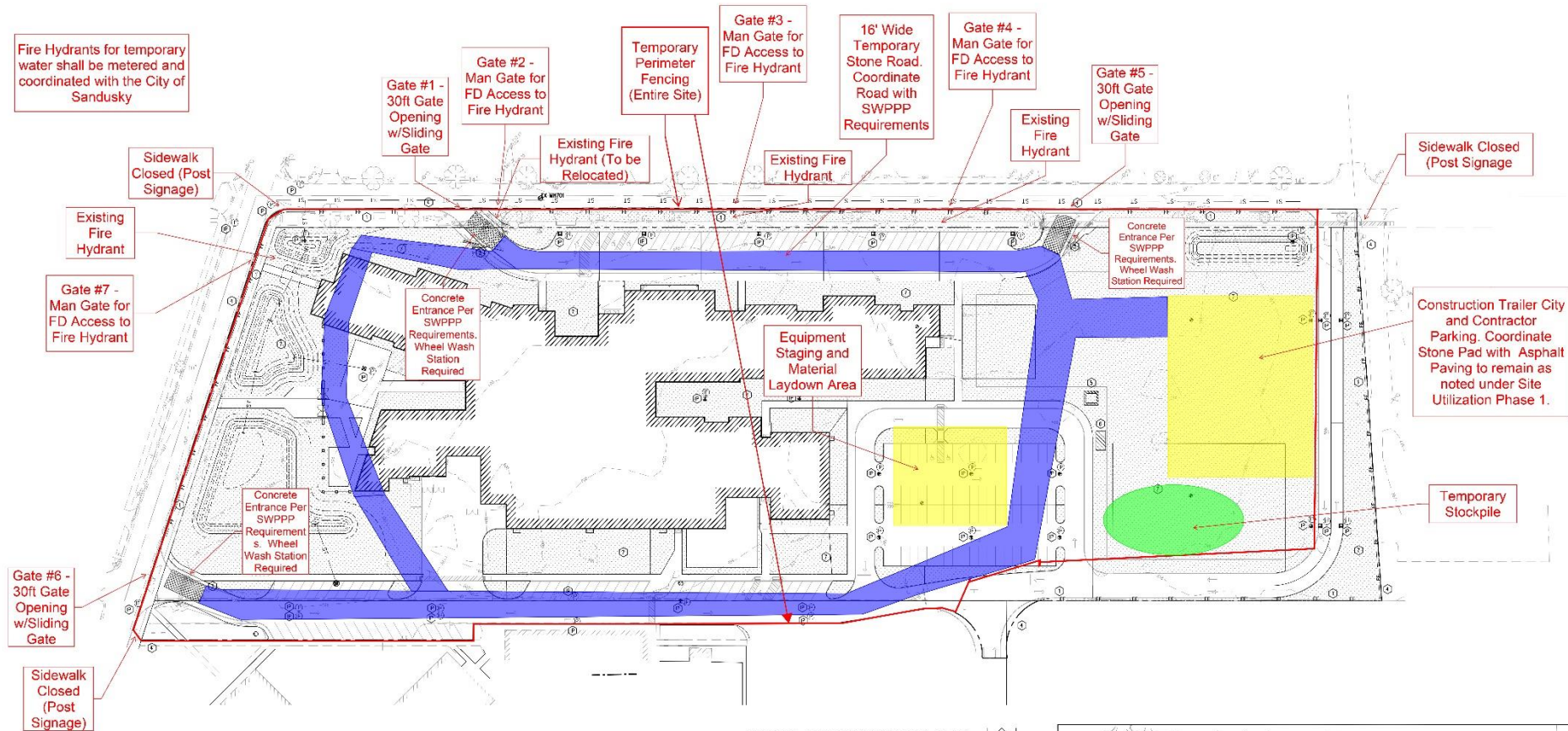
**NEW
INTERMEDIATE
SCHOOL**

990 Students

145,516 sf.

**LESKO
ARCHITECTURE**

Sandusky Intermediate School (Hayes 3-6) Phase 2: Site Utilization Plan (When Required by the Construction Manager)



Stone Roads to be a -12" from finish grade. Tensar Tx190 geogrid with 12" of limestone. 1s and 2s top dressed with #304 limestone rolled in. Drive aprons to comply with SWPPP requirements. Coordinate with existing asphalt that will remain during construction. Refer to Phase I Site Utilization Plan for asphalt that will remain

Construction Trailer Pad, contractor parking, conex box areas all to be 8" profile keyed in at -12" from finish grade. Tensar Tx190 geogrid with 6" limestone 1s & 2s topped with #57 limestone. Coordinate with existing asphalt that will remain during construction. Refer to Phase I Site Utilization Plan for asphalt that will remain

BLUE STREAK FAMILY

NEW
INTERMEDIATE
SCHOOL

990 Students

145,516 sf.

Sandusky Intermediate School (Hayes 3-6) Phase 3: Site Utilization Plan (When Required by the Construction Manager)

Stone Roads to be a -12" from finish grade. Tensar Tx190 geogrid with 12" of limestone. 1s and 2s top dressed with #304 limestone rolled in. Drive aprons to comply with SWPPP requirements. Coordinate with existing asphalt that will remain during construction. Refer to Phase I Site Utilization Plan for asphalt that will remain

Construction Trailer Pad, contractor parking, conex box areas all to be 8" profile keyed in at -12" from finish grade. Tensar Tx190 geogrid with 6" limestone 1s & 2s topped with #57 limestone. Coordinate with existing asphalt that will remain during construction. Refer to Phase I Site Utilization Plan for asphalt that will remain

